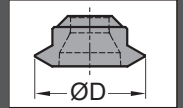
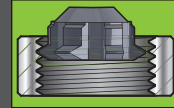


Thread Type **MF 60°**

Thread Size	Parts No.	ØD
MF 6 x 0.75	R06005-05006	5.0
MF 7 x 0.75		
MF 8 x 0.75		
MF 8 x 1.0	R06005-05010	5.0
	R06007-06810	6.8
MF 9 x 0.75	R06005-05006	5.0
MF 9 x 1.0	R06005-05010	5.0
	R06007-06810	6.8
MF 10 x 0.75	R06005-05006	5.0
MF 10 x 1.0	R06005-05010	5.0
	R06007-06810	6.8
	R06010-08510	8.5
MF 10 x 1.25	R06007-06810	6.8
	R06010-08510	8.5
MF 11 x 0.75	R06005-05006	5.0
MF 11 x 1.0	R06005-05010	5.0
	R06007-06810	6.8
	R06010-08510	8.5
	R06010-10010	10.0
MF 12 x 1.0	R06005-05010	5.0
	R06007-06810	6.8
	R06010-08510	8.5
	R06010-10010	10.0
MF 12 x 1.25	R06007-06810	6.8
	R06010-08510	8.5
	R06010-10010	10.0
MF 12 x 1.5	R06010-08510	8.5
	R06010-10010	10.0
MF 14 x 1.0	R06005-05010	5.0
	R06007-06810	6.8
	R06010-08510	8.5
	R06010-10010	10.0
MF 14 x 1.25	R06007-06810	6.8
	R06010-08510	8.5
	R06010-10010	10.0
	R06010-10010	10.0
MF 14 x 1.5	R06010-08510	8.5
	R06010-10010	10.0
MF 15 x 1.0	R06005-05010	5.0
	R06007-06810	6.8
	R06010-08510	8.5
	R06010-10010	10.0
MF 15 x 1.5	R06010-08510	8.5
	R06010-10010	10.0
MF 16 x 1.0	R06005-05010	5.0
	R06007-06810	6.8
	R06010-08510	8.5
	R06010-10010	10.0
MF 16 x 1.5	R06010-08510	8.5
	R06010-10010	10.0
MF 17 x 1.0	R06005-05010	5.0
	R06007-06810	6.8
	R06010-08510	8.5

Thread Size	Parts No.	ØD
MF 17 x 1.0	R06010-10010	10.0
MF 17 x 1.5	R06010-08510	8.5
	R06010-10010	10.0
MF 18 x 1.0	R06005-05010	5.0
	R06007-06810	6.8
	R06010-08510	8.5
	R06010-10010	10.0
MF 18 x 1.5	R06010-08510	8.5
	R06010-10010	10.0
MF 18 x 2.0	R06010-10010	10.0
MF 20 x 1.0	R06005-05010	5.0
	R06007-06810	6.8
	R06010-08510	8.5
	R06010-10010	10.0
MF 20 x 1.5	R06010-08510	8.5
	R06010-10010	10.0
MF 20 x 2.0	R06010-10010	10.0
MF 22 x 1.0	R06005-05010	5.0
	R06007-06810	6.8
	R06010-08510	8.5
	R06010-10010	10.0
MF 22 x 1.5	R06010-08510	8.5
	R06010-10010	10.0
MF 22 x 2.0	R06010-10010	10.0
MF 24 x 1.0	R06005-05010	5.0
	R06007-06810	6.8
	R06010-08510	8.5
	R06010-10010	10.0
MF 24 x 1.5	R06010-08510	8.5
	R06010-10010	10.0
	R06010-10010	10.0
MF 24 x 2.0	R06010-10010	10.0
MF 25 x 1.0	R06005-05010	5.0
	R06007-06810	6.8
	R06010-08510	8.5
	R06010-10010	10.0
MF 25 x 1.5	R06010-08510	8.5
	R06010-10010	10.0
MF 25 x 2.0	R06010-10010	10.0
MF 27 x 1.0	R06005-05010	5.0
	R06007-06810	6.8
	R06010-08510	8.5
	R06010-10010	10.0
MF 27 x 1.5	R06010-08510	8.5
	R06010-10010	10.0
MF 27 x 2.0	R06010-10010	10.0
MF 28 x 1.0	R06005-05010	5.0
	R06007-06810	6.8
	R06010-08510	8.5
MF 28 x 1.5	R06010-08510	8.5
	R06010-10010	10.0
MF 28 x 2.0	R06010-10010	10.0

Thread Size	Parts No.	ØD
MF 30 x 1.0	R06005-05010	5.0
	R06007-06810	6.8
	R06010-08510	8.5
	R06010-10010	10.0
MF 30 x 1.5	R06010-08510	8.5
	R06010-10010	10.0
MF 30 x 2.0	R06010-10010	10.0
MF 32 x 1.5	R06010-08510	8.5
	R06010-10010	10.0
MF 32 x 2.0	R06010-10010	10.0
MF 33 x 1.5	R06010-08510	8.5
	R06010-10010	10.0
MF 33 x 2.0	R06010-10010	10.0
MF 35 x 1.5	R06010-08510	8.5
	R06010-10010	10.0
MF 36 x 1.5	R06010-08510	8.5
	R06010-10010	10.0
MF 36 x 2.0	R06010-10010	10.0
MF 39 x 1.5	R06010-08510	8.5
	R06010-10010	10.0
MF 39 x 2.0	R06010-10010	10.0
MF 40 x 1.5	R06010-08510	8.5
	R06010-10010	10.0
MF 40 x 2.0	R06010-10010	10.0
MF 42 x 1.5	R06010-08510	8.5
	R06010-10010	10.0
MF 42 x 2.0	R06010-10010	10.0
MF 45 x 1.5	R06010-08510	8.5
	R06010-10010	10.0
MF 45 x 2.0	R06010-10010	10.0
MF 48 x 1.5	R06010-08510	8.5
	R06010-10010	10.0
MF 48 x 2.0	R06010-10010	10.0
MF 50 x 1.5	R06010-08510	8.5
	R06010-10010	10.0
MF 50 x 2.0	R06010-10010	10.0
MF 52 x 2.0		
MF 55 x 2.0		
MF 56 x 2.0		
MF 58 x 2.0		
MF 60 x 2.0		
MF 62 x 2.0		
MF 64 x 2.0		
MF 65 x 2.0		
MF 68 x 2.0		
MF 70 x 2.0		
MF 72 x 2.0		
MF 75 x 2.0		
MF 76 x 2.0		
MF 80 x 2.0		



Thread Type **M 60°**

Thread Size	Parts No.	ØD
M6 x 1	R06005-05010	5.0
M7 x 1		
M8 x 1.25	R06007-06810	6.8
M9 x 1.25		
M10 x 1.5	R06010-08510	8.5
M11 x 1.5		
M12 x 1.75	R06010-10010	10.0
M14 x 2		
M16 x 2		

Thread Type **UNF 60°**

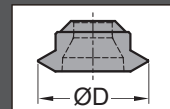
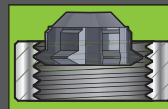
Thread Size	Parts No.	ØD
UNF 1/4-28	R06005-05006	5.0
	R06005-05010	5.0
UNF 5/16-24	R06005-05010	5.0
	R06007-06810	6.8
UNF 3/8-24	R06005-05010	5.0
	R06007-06810	6.8
	R06010-08510	8.5
UNF 7/16-20	R06007-06810	6.8
	R06010-08510	8.5
UNF 1/2-20	R06007-06810	6.8
	R06010-08510	8.5
	R06010-10010	10.0
UNF 9/16-18	R06010-08510	8.5
	R06010-10010	10.0
UNF 5/8-18	R06010-08510	8.5
	R06010-10010	10.0
UNF 3/4-16	R06010-10010	10.0
UNF 7/8-14	R06010-10010	10.0

Thread Type **UNC 60°**

Thread Size	Parts No.	ØD
UNC 1/4-20	R06005-05012	5.00
UNC 5/16-18	R06005-05613	5.60
UNC 3/8-16	R06007-07216	7.20
UNC 7/16-14	R06010-09020	9.00
UNC 1/2-13	R06010-09522	9.50
	R06010-10010	10.0
UNC 9/16-12	R06010-10024	10.0

Thread Type **UNEF 60°**

Thread Size	Parts No.	ØD	Thread Size	Parts No.	ØD	Thread Size	Parts No.	ØD
UNEF 1/4-32	R06005-05006	5.0	UNEF 3/4-20	R06007-06810	6.8	UNEF 1 1/4-18	R06010-08510	8.5
UNEF 5/16-32		5.0		R06010-08510	8.5		R06010-10010	10.0
UNEF 3/8-32		5.0		R06010-10010	10.0	UNEF 1 5/16-18	R06010-08510	8.5
UNEF 7/16-28	R06005-05006	5.0	UNEF 13/16-20	R06007-06810	6.8		R06010-10010	10.0
	R06005-05010	5.0		R06010-08510	8.5	UNEF 1 3/8-18	R06010-08510	8.5
	R06007-06810	6.8		R06010-10010	10.0		R06010-10010	10.0
UNEF 1/2-28	R06005-05006	5.0	UNEF 7/8-20	R06007-06810	6.8	UNEF 1 7/16-18	R06010-08510	8.5
	R06005-05010	5.0		R06010-08510	8.5		R06010-10010	10.0
	R06007-06810	6.8		R06010-10010	10.0	UNEF 1 1/2-18	R06010-08510	8.5
UNEF 9/16-24	R06005-05010	5.0	UNEF 15/16-20	R06007-06810	6.8		R06010-10010	10.0
	R06007-06810	6.8		R06010-08510	8.5	UNEF 1 9/16-18	R06010-08510	8.5
	R06010-08510	8.5		R06010-10010	10.0		R06010-10010	10.0
	R06010-10010	10.0	UNEF 1-20	R06007-06810	6.8	UNEF 1 5/8-18	R06010-08510	8.5
UNEF 5/8-24	R06005-05010	5.0		R06010-08510	8.5		R06010-10010	10.0
	R06007-06810	6.8		R06010-10010	10.0	UNEF 1 11/16-18	R06010-08510	8.5
	R06010-08510	8.5	UNEF 1 1/16-18	R06010-08510	8.5		R06010-10010	10.0
	R06010-10010	10.0		UNEF 1 1/8-18	R06010-10010	10.0	UNEF 1 3/16-18	R06010-08510
UNEF 11/16-24	R06005-05010	5.0	R06010-08510		8.5	R06010-10010		10.0
	R06007-06810	6.8	UNEF 1 3/16-18	R06010-08510	8.5	R06010-10010	10.0	
	R06010-08510	8.5		UNEF 1 3/16-18	R06010-08510	8.5		
	R06010-10010	10.0	R06010-10010		10.0			



Thread Type

G, PF, Rp, PS; BSPP. 55°

Thread Size	Parts No.	ØD
G (PF) 1/16	R05507-06512	6.56
G (PF) 1/8		
G (PF) 1/4	R05510-10018	10.0
G (PF) 3/8		
G (PF) 1/2		
G (PF) 5/8		
G (PF) 3/4		
G (PF) 7/8		

Tapered Thread

Thread Type

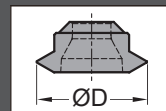
R, PT, Rc; BSPT. 55°

Thread Size	Parts No.	ØD
PT 1/4	R05510-09516	9.5
PT 3/8		
PT 1/2	R05510-10025	10.0
PT 3/4		

Thread Type

NPT 60°

Thread Size	Parts No.	ØD
NPT 1/4	R06010-09808	9.8
NPT 3/8		
NPT 1/2	R06010-10810	10.8
NPT 3/4		

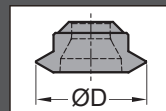


Thread Type

MF 60°

Thread Size	Parts No.	ØD
MF 4 x 0.5	R06005-05006	5.0
MF 4.5 x 0.5		
MF 5 x 0.5		
MF 5.5 x 0.5		
MF 6 x 0.75	R06005-05010	5.0
	R06007-06810	6.8
	R06010-08510	8.5
MF 7 x 0.75	R06005-05010	5.0
	R06007-06810	6.8
	R06010-08510	8.5
MF 8 x 0.75	R06005-05010	5.0
	R06007-06810	6.8
	R06010-08510	8.5
MF 8 x 1.0	R06007-06810	6.8
	R06010-08510	8.5
	R06010-10010	10.0
MF 9 x 0.75	R06005-05010	5.0
	R06007-06810	6.8
	R06010-08510	8.5
MF 9 x 1.0	R06007-06810	6.8
	R06010-08510	8.5
	R06010-10010	10.0
MF 10 x 0.75	R06005-05010	5.0
	R06007-06810	6.8
	R06010-08510	8.5
MF 10 x 1.0	R06007-06810	6.8
	R06010-08510	8.5
	R06010-10010	10.0
MF 10 x 1.25	R06010-10010	10.0
MF 11 x 0.75	R06005-05010	5.0
	R06007-06810	6.8
	R06010-08510	8.5
MF 11 x 1.0	R06007-06810	6.8
	R06010-08510	8.5
	R06010-10010	10.0
MF 12 x 1.0	R06007-06810	6.8
	R06010-08510	8.5
	R06010-10010	10.0
MF 12 x 1.25	R06010-10010	10.0
MF 12 x 1.5		
MF 14 x 1.0	R06007-06810	6.8
	R06010-08510	8.5
	R06010-10010	10.0
MF 14 x 1.25	R06010-10010	10.0
MF 14 x 1.5		
MF 15 x 1.0	R06007-06810	6.8
	R06010-08510	8.5
	R06010-10010	10.0
MF 15 x 1.5	R06010-10010	10.0

Thread Size	Parts No.	ØD
MF 16 x 1.0	R06007-06810	6.8
	R06010-08510	8.5
	R06010-10010	10
MF 16 x 1.5	R06010-10010	10
MF 17 x 1.0	R06007-06810	6.8
	R06010-08510	8.5
	R06010-10010	10
MF 17 x 1.5	R06010-10010	10
MF 18 x 1.0	R06007-06810	6.8
	R06010-08510	8.5
	R06010-10010	10
MF 18 x 1.5	R06010-10010	10
MF 20 x 1.0	R06007-06810	6.8
	R06010-08510	8.5
	R06010-10010	10
MF 20 x 1.5	R06010-10010	10
MF 22 x 1.0	R06007-06810	6.8
	R06010-08510	8.5
	R06010-10010	10
MF 22 x 1.5	R06010-10010	10
MF 24 x 1.0	R06007-06810	6.8
	R06010-08510	8.5
	R06010-10010	10
MF 24 x 1.5	R06010-10010	10
MF 25 x 1.0	R06007-06810	6.8
	R06010-08510	8.5
	R06010-10010	10
MF 25 x 1.5	R06010-10010	10
MF 27 x 1.0	R06007-06810	6.8
	R06010-08510	8.5
	R06010-10010	10
MF 27 x 1.5	R06010-10010	10
MF 28 x 1.0	R06007-06810	6.8
	R06010-08510	8.5
	R06010-10010	10
MF 28 x 1.5	R06010-10010	10
MF 30 x 1.0	R06007-06810	6.8
	R06010-08510	8.5
	R06010-10010	10
MF 30 x 1.5	R06010-10010	10
MF 32 x 1.5		
MF 33 x 1.5		
MF 35 x 1.5		
MF 36 x 1.5		
MF 39 x 1.5		
MF 40 x 1.5		
MF 42 x 1.5		
MF 45 x 1.5		
MF 48 x 1.5		
MF 50 x 1.5		



Thread Type **M 60°**

Thread Size	Parts No.	ØD
M3 x 0.5	R06005-05006	5.0
M3.5 x 0.6		
M3.5 x 0.6	R06005-05010	5.0
M4 x 0.7	R06005-05006	5.0
	R06005-05010	5.0
	R06007-06810	6.8
	R06010-08510	8.5
M4.5 x 0.75	R06005-05010	5.0
	R06007-06810	6.8
	R06010-08510	8.5
M5 x 0.8	R06005-05010	5.0
	R06007-06810	6.8
	R06010-08510	8.5
M6 x 1.0	R06007-06810	6.8
	R06010-08510	8.5
	R06010-10010	10.0
M7 x 1.0	R06007-06810	6.8
	R06010-08510	8.5
	R06010-10010	10.0
M8 x 1.25	R06010-10010	10.0
M9 x 1.25		
M10 x 1.5		
M11 x 1.5		
M12 x 1.75		

Thread Type **UNF 60°**

Thread Size	Parts No.	ØD
UNF #4-48	R06005-05006	5.0
UNF #5-44	R06005-05006	5.0
UNF #6-40	R06005-05006	5.0
	R06005-05010	5.0
UNF #8-36	R06005-05006	5.0
	R06005-05010	5.0
UNF #10-32	R06005-05010	5.0
	R06007-06810	6.8
	R06010-08510	8.5
UNF #12-28	R06007-06810	6.8
	R06010-08510	8.5
UNF 1/4-28	R06007-06810	6.8
	R06010-08510	8.5
UNF 5/16-24	R06010-08510	8.5
	R06010-10010	10.0
UNF 3/8-24	R06010-08510	8.5
	R06010-10010	10.0
UNF 7/16-20	R06010-10010	10.0
UNF 1/2-20		
UNF 9/16-18		
UNF 5/8-18		
UNF 3/4-16		
UNF 7/8-14		

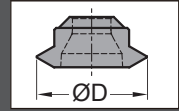
Thread Type **UNC 60°**

Thread Size	Parts No.	ØD
UNC #6-32	R06005-05010	5.0
	R06007-06810	6.8
	R06010-08510	8.5
UNC #8-32	R06005-05010	5.0
	R06007-06810	6.8
	R06010-08510	8.5
UNC #10-24	R06010-08510	8.5
	R06010-10010	10.0
UNC #12-24	R06010-08510	8.5
	R06010-10010	10.0
UNC 1/4-20	R06010-10010	10.0
UNC 5/16-18		
UNC 3/8-16		
UNC 7/16-14		



Inserts >> Quick Pick Parallel Thread

External Thread



Thread Type **UNEF** 60°

Thread Size	Parts No.	ØD
UNEF #12-32	R06005-05010	5.0
	R06007-06810	6.8
	R06010-08510	8.5
UNEF 1/4-32	R06005-05010	5.0
	R06007-06810	6.8
	R06010-08510	8.5
UNEF 5/16-32	R06005-05010	5.0
	R06007-06810	6.8
	R06010-08510	8.5
UNEF 3/8-32	R06005-05010	5.0
	R06007-06810	6.8
	R06010-08510	8.5
UNEF 7/16-28	R06007-06810	6.8
	R06010-08510	8.5
UNEF 1/2-28	R06007-06810	6.8
	R06010-08510	8.5
UNEF 9/16-24	R06010-08510	8.5
	R06010-10010	10.0
UNEF 5/8-24	R06010-08510	8.5
	R06010-10010	10.0
UNEF 11/16-24	R06010-08510	8.5
	R06010-10010	10.0
UNEF 3/4-20	R06010-10010	10.0
UNEF 13/16-20		
UNEF 7/8-20		
UNEF 15/16-20		
UNEF 1-20		
UNEF 1 1/16-18		
UNEF 1 1/8-18		
UNEF 1 3/16-18		
UNEF 1 1/4-18		
UNEF 1 5/16-18		
UNEF 1 3/8-18		
UNEF 1 7/16-18		
UNEF 1 1/2-18		
UNEF 1 9/16-18		
UNEF 1 5/8-18		
UNEF 1 11/16-18		

Thread Type **G, PF, Rp, 55° PS; BSPP.**

Thread Size	Parts No.	ØD
G (PF) 1/16	R05507-06512	6.56
G (PF) 1/8		
G (PF) 1/4	R05510-10018	10.0
G (PF) 3/8		
G (PF) 1/2		
G (PF) 5/8		
G (PF) 3/4		
G (PF) 7/8		

Tapered Thread

Thread Type **R, PT, Rc; 55° BSPT.**

Thread Size	Parts No.	ØD
PT 1/4	R05510-09516	9.5
PT 3/8		
PT 1/2	R05510-10025	10.0
PT 3/4		

Thread Type **NPT** 60°

Thread Size	Parts No.	ØD
NPT 1/4	R06010-09808	9.8
NPT 3/8		
NPT 1/2	R06010-10810	10.8
NPT 3/4		

