



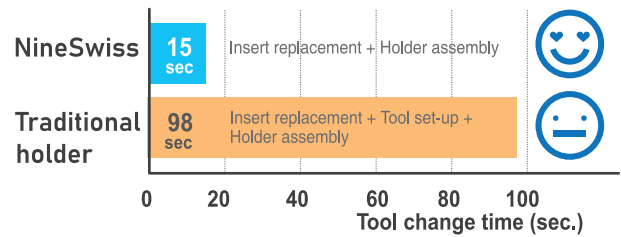
# NineSwiss

Modular Head and Tool Holder for Swiss Type Machine



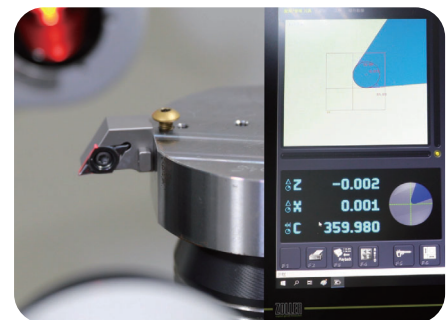
## Quick Change System

- The modular design ensures high repeatability, allowing the head to be exchanged in just 15 seconds.
- No more tool length reset after changing the modular head, saving tool change time and machine downtime.



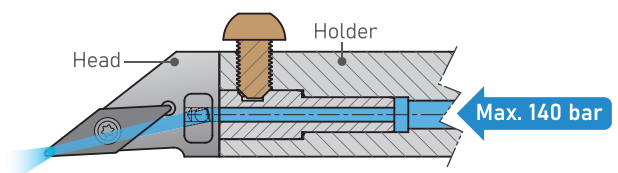
## High Rigidity and Excellent Repeatability

- The head is located on a V-block and an extended shaft to provide rigidity and repeatability.
- Its cutting performance matches or surpasses that of solid-type indexable turning tools.
- Tool length and the height of the cutting edge are consistently maintained while changing modular heads, with a high position repeatability of  $\pm 0.02$  mm.

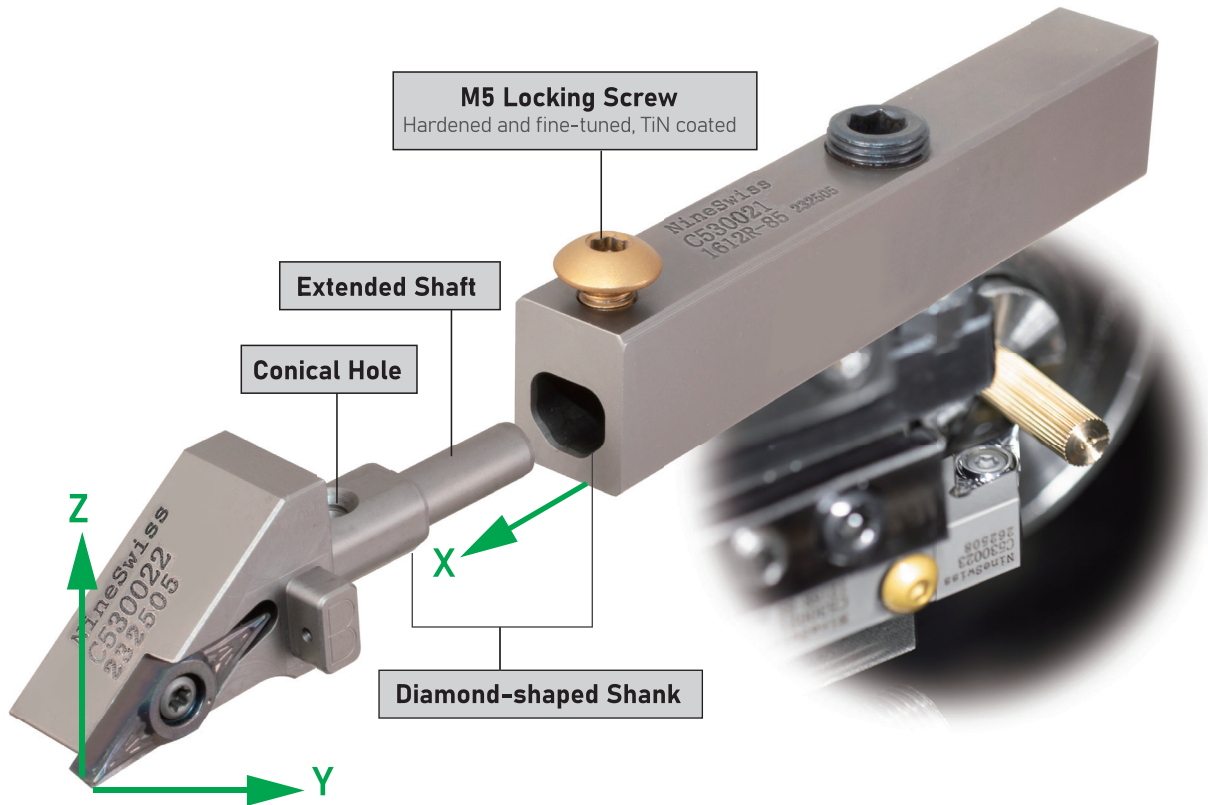


## High Coolant Pressure

- The metal-to-metal contact between the head and holder well seals the entire system, combined with the extended shaft and sealed glue, which withstands the high coolant pressure up to 140 bar.



## Quick and Precise Tool Length Positioning

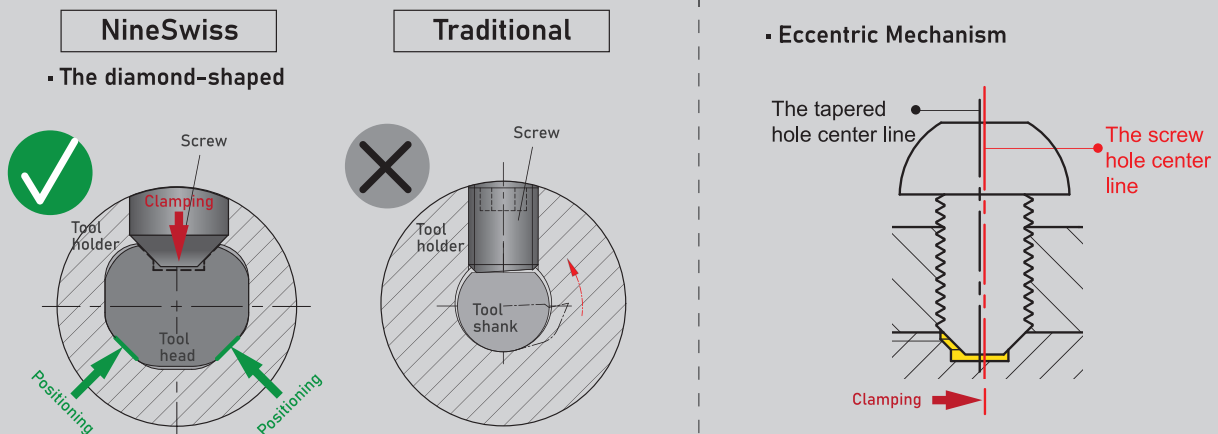


### The Innovative Clamping Mechanism

The precision-ground "Diamond shape" makes perfect contact with the V-block inside the tool holder, creating an exceptionally stable and gap-free rigid lock.

While the screw is tightened, it pulls the modular head back into the holder.

It ensures the X, Y, and Z axes positions, completely eliminating the backlash that exist in traditional clamping methods.



► Modular Head for Turning >>

Fig. 1

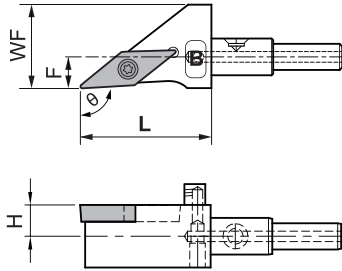


Fig. 2

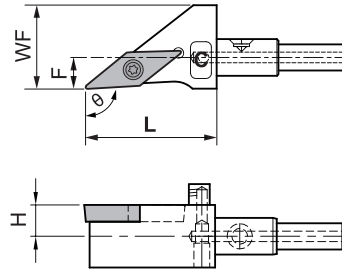


Fig. 3

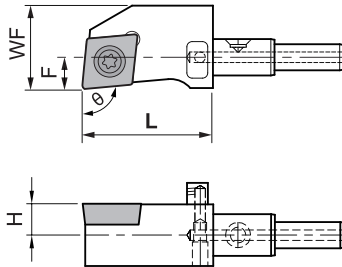


Fig. 4

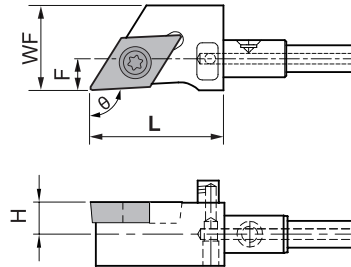
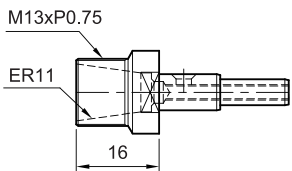


Fig.	Parts No.	Type	$\theta$	L	F	WF	H	ISO Insert
1	00-N-C530022	DM12-SVJBR-0625-11	93°	25	6	16	6	VBGT110304
2	00-N-C560069	DM12-SVJCR-0625-11	93°					VCGT110304
3	00-N-C560070	DM12-SCJCR-0625-09	95°					CCGT09T304
4	00-N-C530023	DM12-SDJCR-0625-11	93°					DCMT11T304

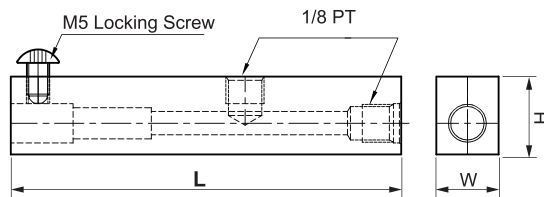
► ER Collet Systems And Holders >>

• Collet Adapter

Part No.: 00-N-C560074  
Type: DM12-ER11

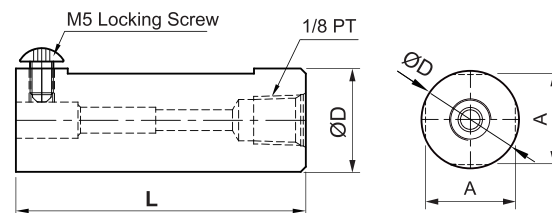


Square Shank



Parts No.	Type	L	W	H
00-N-C530021	DM12-1216R-85H	85	12	16

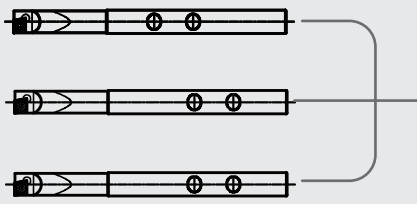
Cylindrical Shank



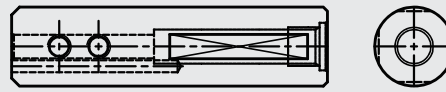
Parts No.	Type	L	A	ØD
00-N-C590120	SL20-DM12-56H	56	19	20

# Boring Bar and Tool Holder - DL Series

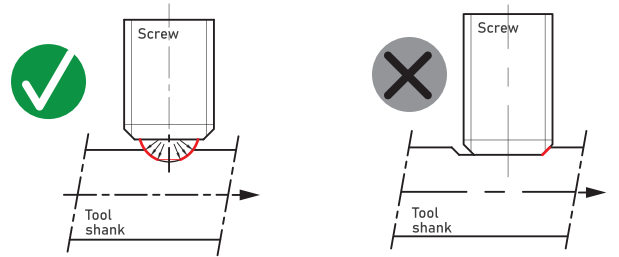
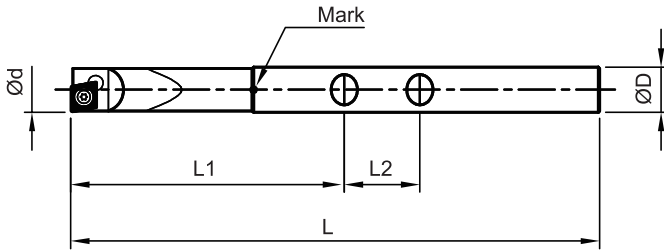
## Boring Bar



## Tool Holder



## Internal Boring Bar

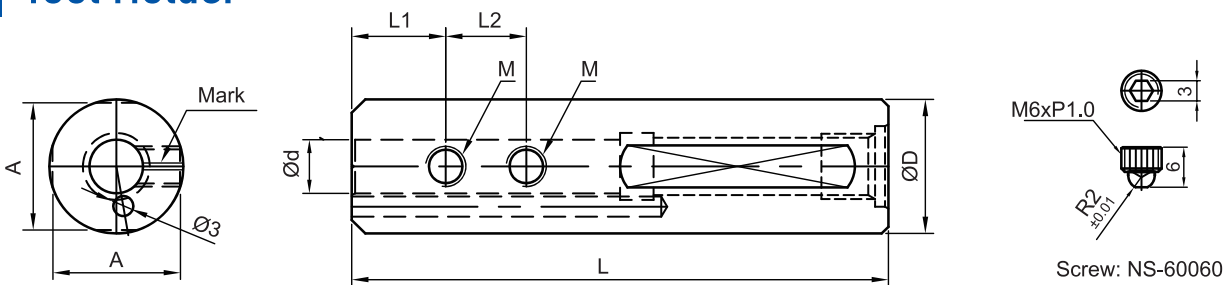


A ball-ended screw locks into a spherical dimple on the tool shank.

A set screw locks with laterally on the tool shank.

Parts No.	Type	ØD	Ød	L1 ±0.05	L2	L ±0.05	Insert Type
00-99862-DL06-0500W	DL06-0500W-070L-CC03	6 <sup>-0.001</sup> <sub>-0.006</sub>	5.0	32.7	10	70	CC03
00-99862-DL06-0550W	DL06-0550W-070L-CC03	6 <sup>-0.001</sup> <sub>-0.006</sub>	5.5	34.5			
00-99862-DL06-0600W	DL06-0600W-070L-CC03	6 <sup>-0.001</sup> <sub>-0.006</sub>	6.0	36.2			
00-99862-DL06-0650W	DL06-0650W-070L-CC03	6 <sup>-0.001</sup> <sub>-0.006</sub>	6.5	38.0			
00-99862-DL08-0700W	DL08-0700W-085L-CC04	8 <sup>-0.001</sup> <sub>-0.006</sub>	7.0	42.8	12	85	CC04
00-99862-DL08-0750W	DL08-0750W-085L-CC04	8 <sup>-0.001</sup> <sub>-0.006</sub>	7.5	44.6			
00-99862-DL08-0800W	DL08-0800W-085L-CC04	8 <sup>-0.001</sup> <sub>-0.006</sub>	8.0	46.0			
00-99862-DL10-0900W	DL10-0900W-085L-CC06	10 <sup>-0.003</sup> <sub>-0.008</sub>	9.0	52.0	14	85	CC06
00-99862-DL10-1000W	DL10-1000W-088L-CC06	10 <sup>-0.003</sup> <sub>-0.008</sub>	10.0	55.0			

## Tool Holder



Parts No.	Type	ØD <sup>-0.003</sup> <sub>-0.008</sub>	Ød	L1 ±0.05	L2	L ±0.05	A	M	Screw
00-99860-DL06-20	SL20-DL06-80L	20	6 <sup>+0.006</sup> <sub>+0.001</sub>	12	10	80	19	M6	NS-60060
00-99860-DL08-20	SL20-DL08-80L	20	8 <sup>+0.006</sup> <sub>+0.001</sub>	14	12				
00-99860-DL10-20	SL20-DL10-80L	20	10 <sup>+0.008</sup> <sub>+0.003</sub>	15	14				
00-99860-DL06-22	SL22-DL06-80L	22	6 <sup>+0.006</sup> <sub>+0.001</sub>	12	10	80	21	M6	NS-60060
00-99860-DL08-22	SL22-DL08-80L	22	8 <sup>+0.006</sup> <sub>+0.001</sub>	14	12				
00-99860-DL10-22	SL22-DL10-80L	22	10 <sup>+0.008</sup> <sub>+0.003</sub>	15	14				